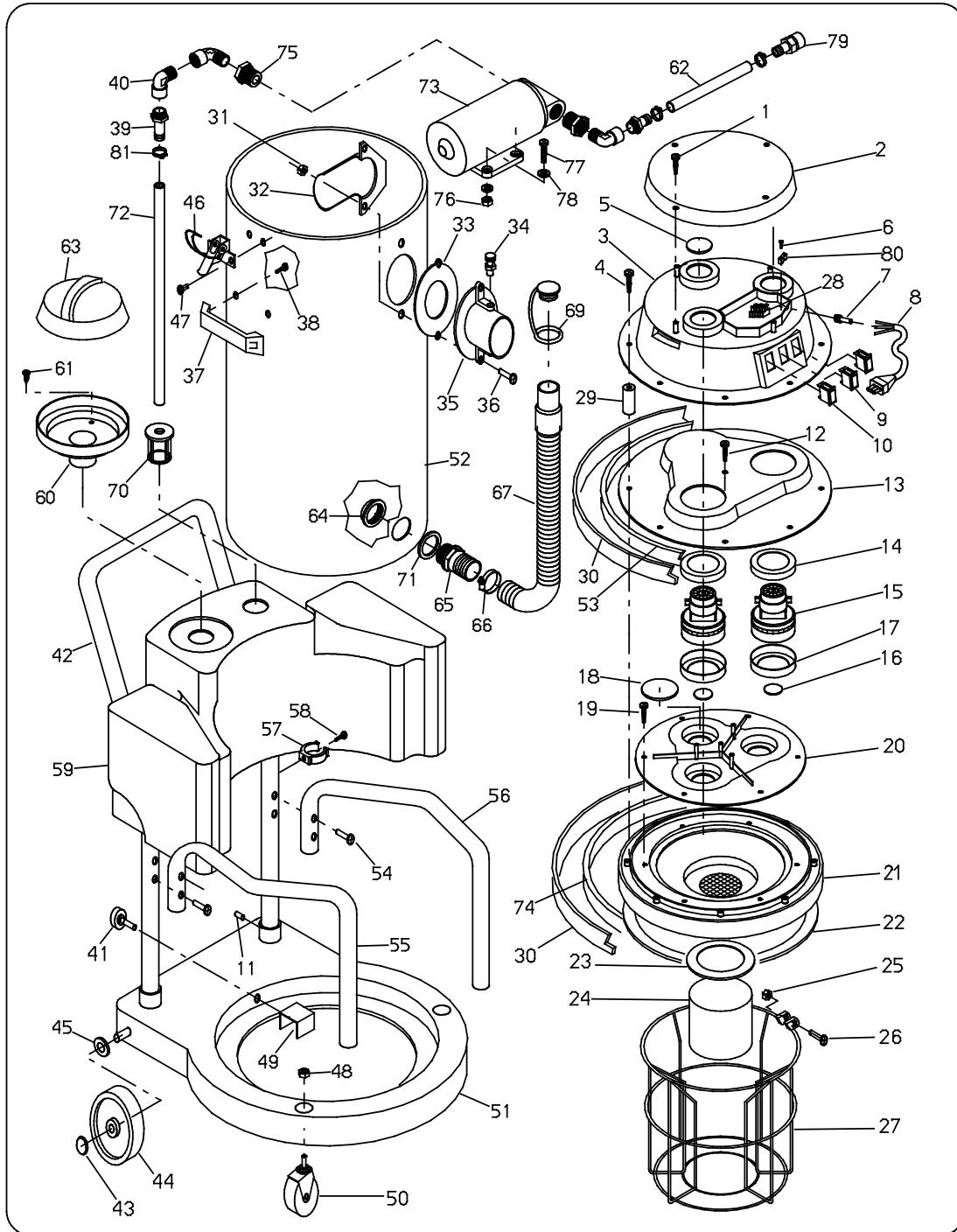


L450

LAVAMOQUETTE MAL 450 - CARPET CLEANING MAL 450 -
 LAVAMOQUETTE MAL 450 - TEPPICHEREINIGUNGS MAL 450



N.Posit	Code	Qta	Descrizione	Description	Description	Bezeichnung
L45.A.01	VA224	4	VITE AUTOFIETT.4,8x19	SCREW	VIS	SCHRAUBE
L45.A.02	CZ004*	1	COPERCHIO	COVER	COUVERCLE	DECKEL
L45.A.03	CU003*	1	CALOTTA COPRI MOTORE D.420	COVER MOTOR	CALOTTE	MOTORKAPPE
L45.A.04	VA248	8	VITE AUTOFIETT. 5,5x50 UNI 6954/	SCREW	VIS	SCHRAUBE
L45.A.05	TO002	1	TAPPO CALOTTA COPRI MOTORE	DOME PLUG	BOUCHON	STOPFEN
L45.A.06	VA261	2	VITE AUTOFIL.TC CROCE 3,5x19 UNI6	SCREW	VIS	SCHRAUBE
L45.A.07	PY309	1	PASSACAVO IN GOMMA NERA	BLACK RUBBER FAIRLEAD	PASSECCABLE NOIR	KABELDURCHGANG
L45.A.08	PY999*	1	CAVO ELETTRICO	ELECTRIC CABLE	CABLE ELECTRIQUE	ELEKTR. KABEL
L45.A.09	IN010	2	INTERRUTTORE	ON/OFF SWITCH	INTERRUPTEUR	SCHALTER
L45.A.10	IN004	1	INTERRUTTORE A SCATTO LUMINOSO	SNAP SWITCH	INTERRUPTEUR A RESSOR	FEDERSCHALTER
L45.A.12	VA326	3	VITE AUTOFIETT.5x25 UNI 6954/7	SCREW	VIS	SCHRAUBE
L45.A.13	DF004	1	DISCO FERMA MOTORE D.420 2 FORI	DISC	DISQUE	SCHETBE
L45.A.14	GR005	2	GUARNIZIONE A L MOTORE 145x5	MOTOR GASKET	GARNITURE	L-DICHTUNG
L45.A.15	MO999*	2	MOTORE ASPIRAZIONE	SUCTION MOTOR	MOTEUR ASPIRATION	ANSAUGMOTOR
L45.A.16	TO004	2	VALVOLA MOTORE	MOTOR VALVE	SOUPAPE	MOTORVENTIL
L45.A.17	GR005	2	GUARNIZIONE A L MOTORE 145x5	MOTOR GASKET	GARNITURE	L-DICHTUNG
L45.A.18	TO003	1	TAPPO BRIGLIA PORTA MOTORE	BRIDLE PLUG	BOUCHON	STOPFEN
L45.A.19	VA222	6	VITE AUTOFIETT.4,8x13 UNI 6954/7	SCREW	VIS	SCHRAUBE
L45.A.20	DF005	1	DISCO PORTA MOTORI D.420	ADAPTER LOWER	DISQUE	SCHETBE
L45.A.21	CB004*	1	CALOTTA BASE D.420	CAP BASE D.420	CALOTTE	KAPPE
L45.A.22	GO010	1	GUARNIZIONE CALOTTA BASE D.420	DOME GASKET	GARNITURE	KAPPEDICHTUNG
L45.A.23	GO009	1	GUARNIZIONE GALLEGGIANTE	GASKET-SHUT OF CAM	GARNITURE	SCHWIMMERDICHTUNG
L45.A.24	GE003	1	GALLEGGIANTE	CAN-SHUT OFF	FLOTTEUR	SCHWIMMER
L45.A.25	DD203	1	DADO M5 UNI 5588/65	NUT	ECROU	MÜTTER
L45.A.26	VC220	1	VITE CILIN.CROCE M5x55 UNI 7687	SCREW	VIS	SCHRAUBE
L45.A.27	CL005	1	CESTELLO h=345	CAGE-SHUT OFF h=345	PANIER	KASTEN
L45.A.28	PY182	1	MORSETTIERA MAMMUT A 3 POLI PA44	TERMINAL BOARD	BORNIER	KLEMMENBRETT
L45.A.29	DA001	8	DISTANZIALE	SPACER	ENTRETOISE	DISTANZSTUECK
L45.A.30	RN002	2	RETINA IN ALLUMINIO L=1260	SOUNDPROOFING NET	FILET	NETZ
L45.A.31	DD204	2	DADO M6 UNI 5588/65	NUT	ECROU	MÜTTER
L45.A.32	DL001	1	DEFLETTORE IN PVC D.40	DEFLACTOR-INTAKE	DEFLECTEUR	KLAPPE
L45.A.33	GO004	1	GUARNIZIONE BOCCHETTONE D.40	GASKET-TANK INTAKE	GARNITURE	STUTZENDICHTUNG
L45.A.34	SE001	1	SALTERELLO	DISCONNECT PIN ASSEMB	SAUTEUR	FALLKLINKE
L45.A.35	BC002	1	BOCCHETTONE D.40	ADAPTOR-TANK INTAKE	GOULOTTE	STUTZEN
L45.A.36	VC227	2	VITE CILIN.CROCE M6x25 UNI 7687	SCREW	VIS	SCHRAUBE
L45.A.37	GG002	2	MANIGLIA IN PLASTICA	PLASTIC HANDLE	POIGNEE	KUNSTSTOFFGRIF
L45.A.38	VA242	4	VITE AUTOFIL.FIL.RAP.5,5x16	SCREW	VIS	SCHRAUBE
L45.A.39	RA001	2	PORTAGOMMA DA 6x1/4	UNION	RACCORD	ANSCHLUSS
L45.A.40	RA004	3	RACCORDO AD L 1/4Mx1/4F	UNION	RACCORD	ANSCHLUSS
L45.A.41	VP013	1	POMELLO M10x70	KNOB	POMMEAU	KUGELGRIF
L45.A.42	MR002	1	MANICO CARRELLO VERNICIATO NERO	TRUCK HANDLE	POIGNEE	WAGENGRIF
L45.A.43	CF001	2	CUFFIA BLOCCA RUOTE	WHEEL LOCK. CASING	PROTECTEUR	RADAERSPERREKASTEN
L45.A.44	RT054	2	RUOTA 175A	WHEEL	ROUE	RAD
L45.A.45	RO209	2	RONDELLA NORMALE DIAM. 20 UNI 659	WASHER	RONDELLE	SCHETBE
L45.A.46	CC004	2	GANCIO ZINGATO	GALVANIZED HOOK	CROCHET ZINGUE	VERZINKTER HAKEN
L45.A.47	RV001	4	RIVETTO 4,8x7	RIVET	RIVET	NIET
L45.A.48	DD263	2	DADO CIECO M10 UNI 5721/69	CAP NUT	ECROU BORGNE	HUTMUTTER
L45.A.49	PI003	1	PIASTRINA FERMA FUSTO	SHAFT STOP PLATE	PLAQUE	PLATTE
L45.A.50	RT026	2	RUOTA PIVOTTANTE	CASTER PIVOT	ROUE	RAD
L45.A.51	BR008	1	CARRELLO NYLON D.420	NYLON TRUCK D.420	CHARIOT	WAGEN AUS NYLON
L45.A.52	CN033	1	FUSTO INOX D.420x600 C/FORO LATER.	INOX TANK D.420x600	CUVE INOX	SCHAFT
L45.A.53	FO011	2	POLIESTIC FILTRI PPI60 A/107	POLIESTIC MAT.	MAT. POLIESTIC	POLIESTIC KUNSTSTOFF
L45.A.54	VA225	4	VITE AUTOFIETT. 4,8x16 UNI 6954/	SCREW	VIS	SCHRAUBE
L45.A.55	MR004	1	SUPPORTO CARRELLO DX	R.H. TRUCK SUPPORT	SUPPORT	HALTER, R.
L45.A.56	MR005	1	SUPPORTO CARRELLO SX	L.H. TRUCK SUPPORT	SUPPORT	HALTER, L.
L45.A.57	ML022	1	MOLLA PER TUBO FLEX	SPRING	RESSORT	FEDER
L45.A.58	VA224	1	VITE AUTOFIETT.4,8x19 UNI 6954/7	SCREW	VIS	SCHRAUBE
L45.A.59	CN034	1	SERBATOIO SOLUZIONE IN POLIETILEN	POLYETHYL.SOLUT.TANK	RESERVOIR	BEHAELTER
L45.A.60	GL005	1	FLANGIA GALLEGGIANTE	FLOATING FLANGE	FLOTTEUR	SCHWIMMERFLANSCH
L45.A.61	VA230	3	VITE AUTOFIETT.4,8x22 UNI 6954/7	SCREW	VIS	SCHRAUBE
L45.A.62	FF007	1	TUBO RETINATO 6x12 L=500 MM	WIRED PIPE	TUYAU RETINE	RASTERSCHLAUCH
L45.A.63	CZ001*	1	COPERCHIO	COVER	COUVERCLE	DECKEL
L45.A.64	GH029	1	GHIERA 1" IN NYLON	PRESSARE	EMBOUT	GITTER
L45.A.65	RC025	1	RACCORDO 1"X 32 MASCHIO	CONNECTOR	RACCORD	ANSCHLUSS
L45.A.66	FS011	1	FASCETTA 25/40	FLOAT.SUPPORT CLAMP	BANDE	SHELLE
L45.A.67	FF029	1	TUBO FLEX SCARICO L=720 C/MANIC.	DRAIN FLEXIBLE PIPE	TUYAU FLEXIBLE	AUSLASSSCHLAUCH
L45.A.69	TA002	1	TAPPO TUBO SCARICO SERBATOIO RECU	PLUG	BOUCHON	STOPFEN
L45.A.70	SF014	1	FILTRO NYLON	NOZZLE FILTER	FILTRE GICLEUR	DUESEFILTER
L45.A.71	GR058	1	GUARNIZIONE D.INT. 1"	GASKET	GARNITURE	DICHTUNG
L45.A.72	FF008	1	TUBO RETINATO 6x12 L=1100 MM	WIRED PIPE	TUYAU RETINE	RASTERSCHLAUCH
L45.A.73	PO010	1	POMPA MODELLO 8090-212-246	SHURELO PUMP	POMPE	PUMPE
L45.A.74	FO003	1	MAT. POLIESTIC PPI80 1200x30x20	POLIESTIC MAT.	MAT. POLIESTIC	POLIESTIC KUNSTSTOFF
L45.A.75	RA006	2	RIDUZIONE DA 1/4Fx3/8	REDUCTION	REDUCTION	REDUZIERUNG
L45.A.76	DD252	4	DADO AUTOBLOCCANTE M5	SELF-LOCKING NUT M5	ECROU DE SURETE	MÜTTER
L45.A.77	VC216	4	VITE CILIN.CROCE M5x30 UNI 7687	SCREW	VIS	SCHRAUBE
L45.A.78	RO300	8	RONDELLA SLARGATA DIAM. 5x15 UNI6	WASHER	RONDELLE	SCHETBE
L45.A.79	RA002	1	INNESTO RAPIDO FEMMINA	QUICK COUPLING	CONNEXION	ANSCHLUSS
L45.A.80	PY252	1	FERMACAVO IN PLASTICA GRANDE	U BOLT	BARRETTE	BUEGELBOLZEN
L45.A.81	FS012	3	FASCETTA 10/16	CLAMP 10/16	BANDE	SHELLE