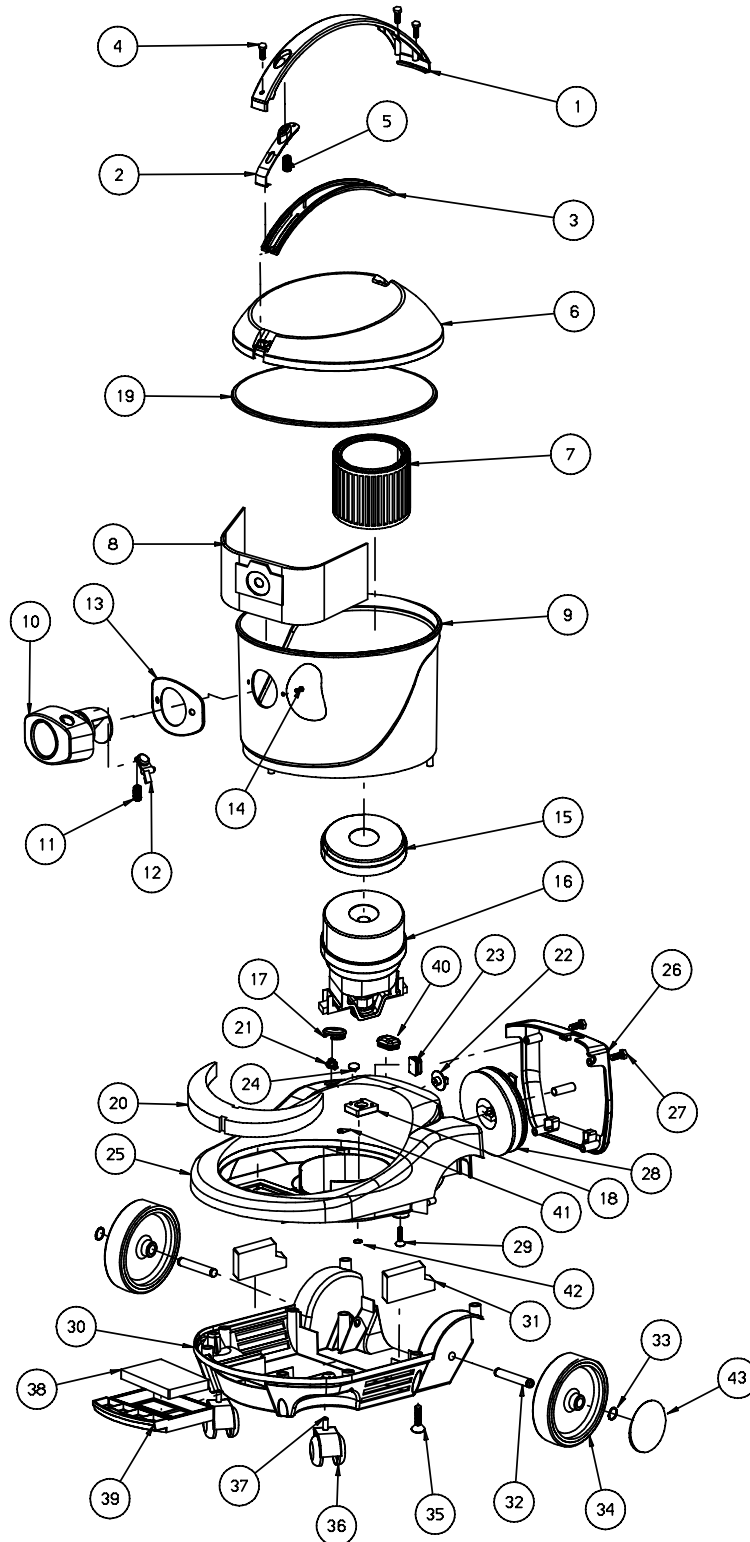


BABY

ASPIRAPOLVERE BABY-DRY VACUUM CLEANER BABY
ASPIRATEUR POUSSIERE BABY-STAUBSAUGER BABY



N.Posit	Code	Qta	Descrizione	Description	Description	Bezeichnung
BABY.A.01	CZ010	1	IMPUGNATURA SUPERIORE	PLASTI HANDLE	POIGNEE	KUNSTSTOFFGRIFF
BABY.A.02	CC016	1	GANCIO IMPUGNATURA	GALVANIZED	CROCHET	VERZINKTER HAKEN
BABY.A.03	CZ009	1	IMPUGNATURA INFERIORE	PLASTI HANDLE	POIGNEE	KUNSTSTOFFGRIFF
BABY.A.04	VA251	3	VITE AUTOF.TC CROCE 3,9x13	SCREW	VIS	SCHRAUBE
BABY.A.05	ML136	1	MOLLA	SPRING	RESSORT	FEDER
BABY.A.06	CZ005	1	COPERCHIO CONTENITORE	COVER	COUVERCLE	DECKEL
BABY.A.07	FT053	1	FILTRO A CARTUCCIA	CARTRIDGE FILTER	FILTRE	EINSATZLFILTER
BABY.A.08	SF815	1	SACCO CARTA	PAPER FILTER BAG	SAC PAPIER	SACK PAPIER
BABY.A.09	CN114	1	FUSTO	ABS SHAFT	CUVE ABS	SCHAFT
BABY.A.10	BC007	1	BOCCHETTONE	UNION	GOULOTTE	STUTZEN
BABY.A.11	ML137	1	MOLLA	SPRING	RESSORT	FEDER
BABY.A.12	SE004	1	LEVETTA	LEVER	LEVIER	HEBEL
BABY.A.13	GO044	1	GUARNIZIONE BOCCHETTONE	UNION BASKET	GARNITURE	STUTZENDICHTUNG
BABY.A.14	VA225	2	VITE AUTOF.TC CROCE 4.8x16	SCREW	VIS	SCHRAUBE
BABY.A.15	GR157	1	GUARNIZIONE SUPERIORE MOTORE	MOTOR GASKET	GARNITURE	L-DICHTUNG
BABY.A.16	MO294	1	MOTORE ASPIRAZIONE 1200W	SUCTION MOTOR	MOTEUR ASPIRATION	ANSAUGMOTOR
BABY.A.17	TO007	1	TAPPO ACCENSIONE	STARTING CAP	BOUCHON-ALLUMAGE	ZUNDUNGSTOPSEL
BABY.A.18	GR163	1	GUARNIZIONE INFERIORE MOTORE	MOTOR GASKET	GARNITURE	L-DICHTUNG
BABY.A.19	GO045	1	PROFILO IN GOMMA	POLIESTIC MAT.	MAT POLIESTIC	POL.KUNSTSTOFF
BABY.A.20	FO042	1	MAT. POLIESTIC	POLIESTIC MAT.	MAT POLIESTIC	POL.KUNSTSTOFF
BABY.A.21	IN103	1	INTERRUTTORE	SWITCH	INTERRUPTEUR	SCHALTER
BABY.A.22	PY687	1	PRESSOSTATO	PRESSARE SWITCH	PRESSOSTAT	DRUCKWACHTER
BABY.A.23	TO001	1	TAPPO	PLUG	BOUCHON	STOPFEN
BABY.A.24	PY688	1	SEGNALATORE NEON ROSSO	RED NEON INDICATOR	INDICATEUR ROUGE	ROTNEONANZEIGER
BABY.A.25	DF011	1	COPERCHIO FERMA MOTORE	DISC	DISQUE	SCHEIBE
BABY.A.26	CZ018	1	COPERCHIO AVVOLGICAVO	COVER	COUVERCLE	DECKEL
BABY.A.27	VA229	4	VITE AUTOF.TC CROCE 4.8x38	SCREW	VIS	SCHRAUBE
BABY.A.28	PY641	1	AVVOLGICAVO	CABLE ROLL-UP	ENROULEUR CABLE	KABELWICKLER
BABY.A.29	VA225	4	VITE AUTOF.TC CROCE 4.8x16	SCREW	VIS	SCHRAUBE
BABY.A.30	CB010	1	BASE PORTANTE	BASE D.420	CALOTTE	KAPPE
BABY.A.31	FO043	2	MAT. POLIESTIC	POLIESTIC MAT.	MAT. POLIESTIC	POL. KUNSTSTOFF
BABY.A.32	AS021	2	ASSALE	AXLE	ESSIEU	ACHSE
BABY.A.33	SG005	4	ANELLO SEEGER PER EST.DIAM.12	SEEGER RING	SEEGER	SEEGERRING
BABY.A.34	RT141	2	RUOTA FISSA D.125	WHEEL	ROUE	RAD
BABY.A.35	VA225	10	VITE AUTOF.TC CROCE 4.8x16	SCREW	VIS	SCHRAUBE
BABY.A.36	RT165	2	RUOTA PIVOTTANTE	WHEEL	ROUE	RAD
BABY.A.37	BS006	2	BUSSOLA	ROTAT.WHEELS BUSH	DOUILLE	RAEDERBUCHSE
BABY.A.38	FO044	1	MAT. POLIESTIC	POLIESTIC MAT.	MAT. POLIESTIC	POL. KUNSTSTOFF
BABY.A.39	PI103	1	CASSETTO SUPPORTO FILTRO	FILTER SUPPORT SLIDE	TIROIR DE SUPPORT	FILTERTRAGERFACH
BABY.A.40	TO026	1	TAPPO x PULSANTE AVVOLGICAVO	CAP FOR ROLL-UP SWITCH	BOUCHON ENROULEUR	KABELWICKLERSTOPSEL
BABY.A.41	GO082	1	MAT. POLIESTIC	POLIESTIC MAT.	MAT. POLIESTIC	POL. KUNSTSTOFF
BABY.A.42	GO083	1	MAT. POLIESTIC	POLIESTIC MAT.	MAT. POLIESTIC	POL. KUNSTSTOFF
BABY.A.43	CF016	2	CUFFIA BLOCCA RUOTE	WHEEL LOCK. CASING	PROTECTEUR	RADAERSPERREKASTEN

Ing. O. FIORENTINI s.r.l.

Sede e Stabilimenti: **50030 PIANCALDOLI** - Loc. ROMBOLA (Firenze) Tel.055/8173610 - Fax 055/817144
50030 PIETRAMALA - Via del Molino (Firenze) Tel. 055/813447

Filiale: **00155 ROMA** - Via Carlo Carrà, 13
Tel.06/22754040/60 - Fax 06/22754065

Filiale: **20132 MILANO** - Via Palmanova, 211/A
Tel.02/27207783 - 2564810 - Fax 02/2592779

E-mail: inform@ingfiorentini.it - sales@ingfiorentini.it - www.ingfiorentini.it